

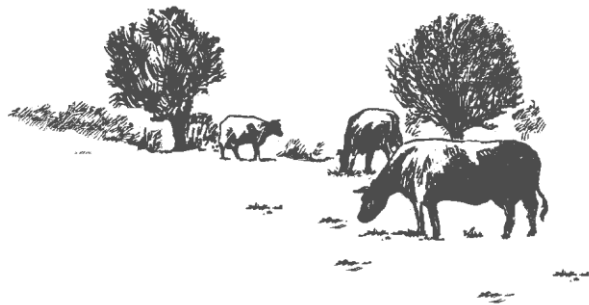
## PARBOLD WALK No 3



For more information about **Parbold Wildlife Group**, go to:

<http://www.parboldonline.info/local-info/conservation.html>

See us on Facebook. <http://www.facebook.com/parboldwildlifegroup>



*Produced by* Chris and Margaret Abel

*Acknowledgements:* Jon Hickling.

Revised 2019

### CIRCULAR WALK FROM THE CAR PARK VILLAGE SHOPS WN8 7HA

**About Parbold** - Parbold is a small township in West Lancashire. It is situated 6 Km (4 miles) from J27 of the M6. It can also be accessed via the regular rail service which runs between Wigan and Southport. The name Parbold is drawn from Old English and means the "Pear Orchard". Its name still reflects its quiet and rural atmosphere.

**Overview** - This is a circular walk to Hilldale and back, across undulating farmland with one gradual ascent to Stoney Lane and a fairly steep descent across fields which can be boggy. Cattle normally graze these fields and **there are a number of stiles, some with steps.**

There are panoramic views to Southport and Blackpool across the Lancashire Coastal Plain on a clear day.

Refreshments can be obtained from the various pubs and cafes in the villages.

There is a bus stop in front of the shops and Parbold Station is a two minute walk away.

**Distance:** Approximately 5.5 Km (3.5 miles)

**Grade:** Moderate

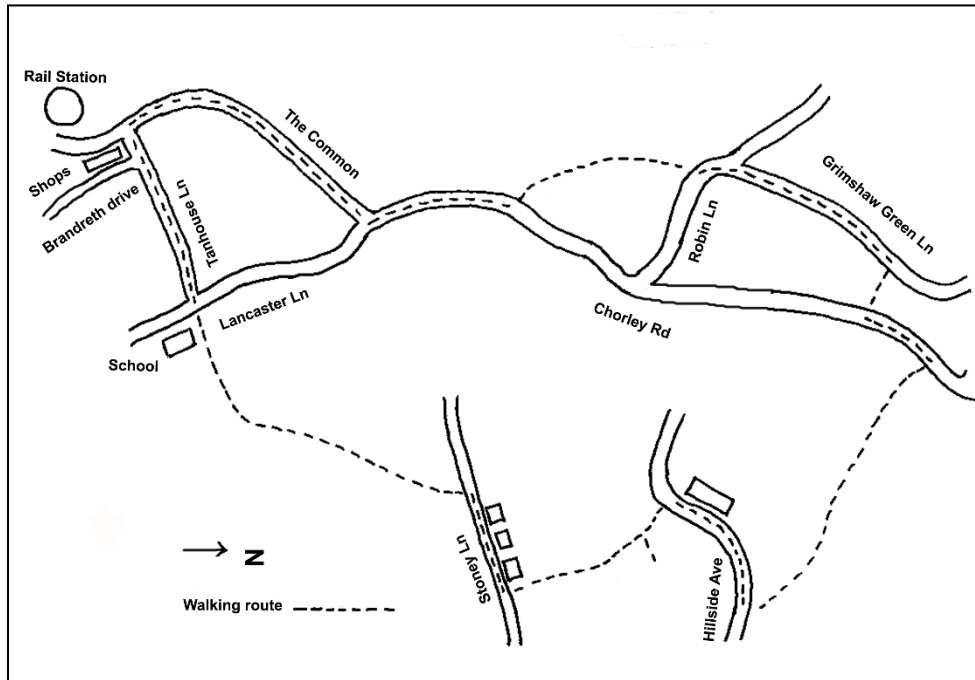
**Walk start point:** Village shops car park. NGR SD 491 109

**OS Maps:** Explorer 285 Southport and Chorley (1:25,000)  
Landranger 108 Liverpool (1:50,000)

Please wear appropriate clothing and footwear; keep to the paths and close gates. Please keep dogs under control and do not leave any litter. There may be livestock in the fields.

Every effort has been made to ensure accuracy in preparing the walks. No liability can be accepted, and people using the routes do so at their own risk. The series of 6 walks are posted on <http://www.parboldonline.info> – Walks page.

### Walk No. 3



**Wildlife Notes:** The walk crosses traditional grazed pastures with rare breed cattle such as belted Galloway and Devon red polls often seen. *On a clear day the Welsh Mountains, Blackpool tower, Bowland fells, Lakeland fells and the Ribble coast are all visible across the Lancashire Coastal Plain, from various viewpoints.*

After crossing the first footbridge on the right there is a woodland where Bluebells flower in spring. In the fields there are numerous pools where amphibians breed and Moorhens and Mallards may be seen. There are also mighty specimens of Oak trees. On reaching the edge of the quarry, at the top of Hillside Avenue, there are large patches of Gorse where Yellowhammers, Linnets, Common Whitethroat and Willow Warblers may be seen. Meadow Brown butterflies are common here in the summer. As one heads downhill across the fields you come to a boggy patch supporting Marsh Horsetail, Marsh Thistle, St John's Wort, Purple Loosestrife, Soft rush, Yellow Meadow Vetchling, Water Mint and Greater Birdsfoot Trefoil. In summer House Martins and Swallows can be seen chasing insects over the fields.

The walk commences from the car park behind the row of shops on The Common. Walk from the car park onto the road behind the shops (Brandreth Drive), cross this road and turn left. At the T-junction turn right up Tanhouse Lane and walk to the top of the road.

At the T-junction with Lancaster Lane cross over and take the footpath opposite, which runs alongside the school. Following this path, go over the stile, keeping the woodland on your left, until you come to a footbridge over the stream. Cross the bridge, turn diagonally right and follow the path uphill to another stile. Go over this and straight across the next field until you come to a stile and a gate. Go over the stile, turn right and walk up the lane (Stoney Lane). Ignoring the first footpath sign on the left walk past the houses and take the next footpath on the left, immediately after the house called 'Swallows Nest'. Go over the stile and cross the field, heading for an electricity pole in the distance. *Views of the Lancashire coast can be seen from here.*

Approximately 40 metres left of the pole is a stone wall, climb up the stone steps and turn left following the path until you meet a lane, Hillside Avenue. Turn right here and walk uphill on the stony track past the buildings, for approximately 100 metres. Just past the Hunters Hill quarry sign there is a stile on the left, quite well hidden in the hedgerow. Go over this and turn left, following the path downhill. Keeping to the left hand side of the fields, cross further stiles **(In wet weather there is one boggy patch which needs to be crossed with care)** until the path comes out between a farm and a house on the main road (Chorley Road). Turn left and after approximately 150 metres cross the road at a house with white gateposts (Number 54).

Go over the stone stile opposite and walk straight down the field and out onto a lane (Grimshaw Green Lane) and turn left. Walk to the end of this lane and turn left. After approximately 25 metres cross the road with care and take the foot path opposite which is a narrow path behind the cottages. Go straight across the field, roughly following the line of telegraph posts. When you reach the track on the far side turn left and exit the field by the lodge onto Chorley Road. Turn right and follow this road, turning right down The Common, until you reach the shops and car park.

